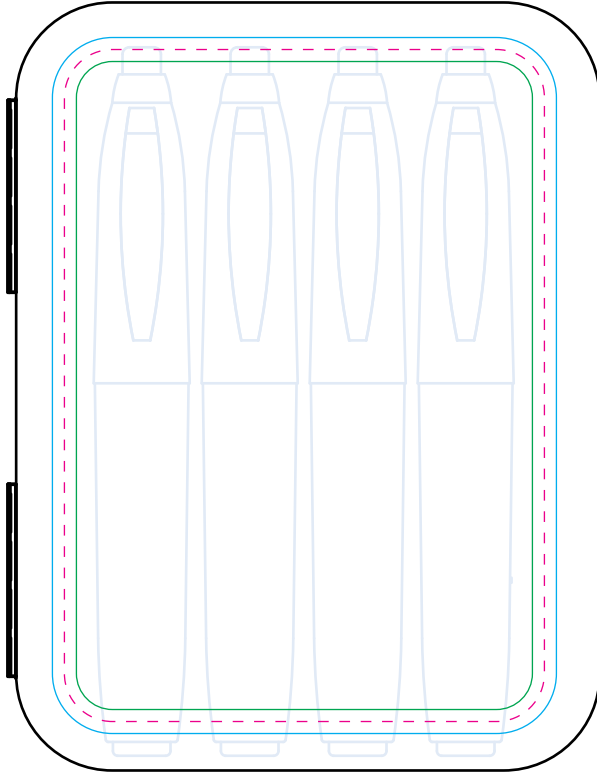


Art Approval Form

Cust Code _____ Date: _____
 PO # _____
 Proof # _____

Please note: Proofs should be approved within 24 hours of receipt. Any delays in art approval may change your ship date as production time begins upon art approval. Decals are printed in 4 color process. Therefore, PMS colors are not guaranteed to be an exact match.

4ct Mini Markers in Plastic Case



Maximum Imprint Area
 2.375" x 3.375"



- INNER BLEED (SAFETY AREA FOR ART)
- CUTLINE (LIVE AREA OF LABEL)
- OUTER BLEED

Item #	Item Color	Quantity	Print Method
937140-FCD	Clear Plastic Box	-	Full Color Decal

Art Guidelines

Follow these guidelines to ensure imprint clarity. We will print all artwork to the best of our ability, but we cannot guarantee the quality of your imprint if these guidelines are not followed.

- Positive Imprint - 6 pt Minimum Sample
- Negative Imprint - 8 pt **Bold** Minimum **Sample**
- Serif & Italic Type - 10 pt Minimum Sample *Sample*
- Line Weight, Positive Lines - .5 pt Minimum _____
- Line Weight, Negative Lines - 1 pt Minimum **_____**
- Registered or Trademark Symbols - 6 pt Minimum TM ®

Registration marks and Trademarks that are too small to print legibly can be enlarged upon request.

Ornate and display type faces will be printed on a case-by-case basis.

Color & Size Variance



1" WIDE
 Note: Fax transmission may cause distortion

- This PDF file is being viewed on an RGB monitor and therefore there will be a variance between the color on your screen and the color of the actual finished product.
- All PMS colors are coated and will be matched as closely as possible.
- This proof should be used to inspect the layout, spelling, grammar & color selection of your order.
- Colors printed on different mediums may not be an exact match.
- This proof **is not** an exact match of the finished product color or quality of the printed piece.

PROOF APPROVED AS IS
 (I have read all applicable warnings and would like to proceed with the art anyway.)

PROOF APPROVED WITH CORRECTIONS (see comments)

SECOND PROOF REQUESTED
 (I understand that there is a \$10(g) charge for this service.)

Signature: _____ Date: _____